

CESSMIR BREAKTHROUGH BREAKFAST

5TH EDITION ON 19 FEBRUARY

Social services across a contested divide: Transnistrian case
Organized In collaboration with the Department of Social Work and Social Pedagogy (Ghent University) and UNU-CRIS

Dr. Gaëlle Le Pavic

Department of Social Work and Social Pedagogy, Centre for the Social Study of Migration and Refugees (CESSMIR) & UNU-CRIS, Bruges



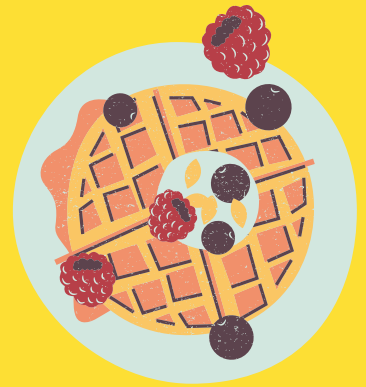
Gaëlle's doctoral dissertation explored social services within and across contested borders in the case of Transnistria, Abkhazia and Samegrelo. The dissertation highlighted the role of Civil Society Organisations (CSOs) as key service providers across and within contested borders. When providing social services, CSOs interact with multiple stakeholders such as local and national authorities and international donors and organisations, all of them controlling key resources, yet the CSOs retain agency in negotiation and remain a crucial actor in filling gaps in social services provision. Gaëlle will share insights from her 4-month fieldwork in Transnistria and the Samegrelo region of Georgia as well as remote data collection in Abkhazia.



Alexandru Stratulat

Programme Manager UN Joint Action - Cross-river support for Human Rights

Alexandru Stratulat has worked extensively on sustainable development issues, as a policy advisor with the Government of Moldova, EU, NATO and UN. He has over 15 years of experience with the UN in Moldova in various positions, including in UN Coordination Office, UNICEF, UN Women, OHCHR and UNDP. Over the years Stratulat was involved in a number of development initiatives on confidence-building, human rights and empowerment of vulnerable groups. He is currently coordinating the first One UN Joint Action, implemented in Moldova - Cross-River support for Human Rights. His focus is on the rights of the vulnerable groups in the conflict-affected set-ups and promotion of confidence- and peace-building measures.



A 'Breakthrough Breakfast' starts with a cup of coffee and some pastry, which ensures we are fully awake and ready to hear more about the latest research findings on the social impact of migration and refugees

PROGRAMME

09.00-09.30

Reception & breakfast
2nd Floor

09.30-11.30

Research & practice
Room 5.1 (fifth floor)

LOCATION

Campus Dunant
Dunantlaan 2
9000 Gent

OR Online

Presentation will be streamed
(without Q&A)
Link will be provided
to those who sign up

This edition will be in English

